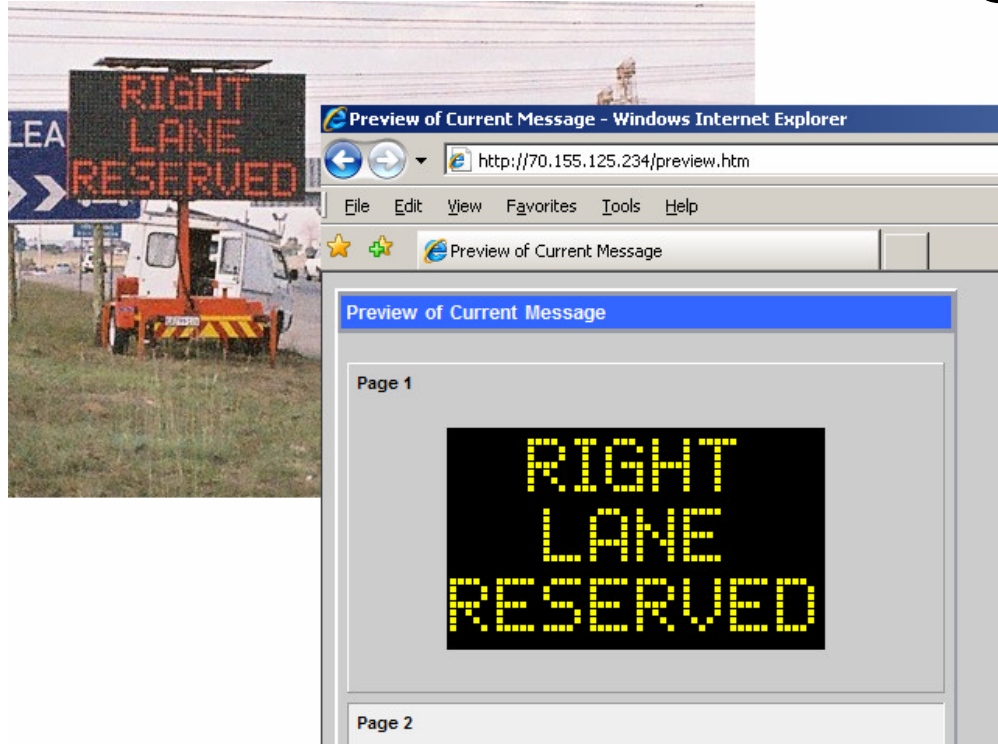


Introducing **WEB Direct Technology**



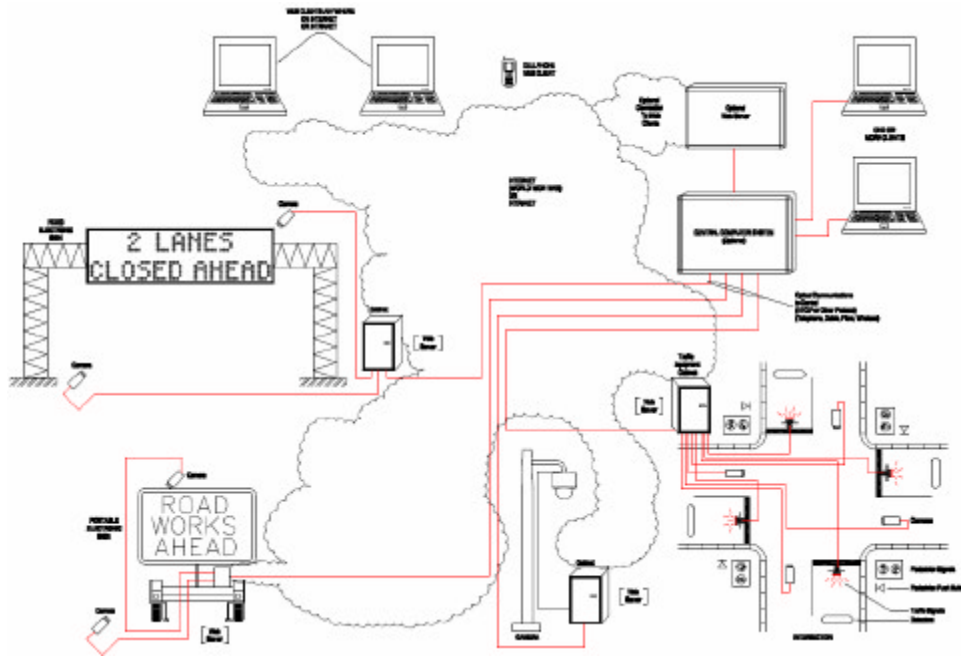
WEBDirect Technology from IDI enables the user to have direct monitoring and control of any Traffic Device over the Web from any browser or WEB enabled PDA. This technology is revolutionizing communications to ITS devices by making the control of these devices no longer tied to the deployment of a Central Control System to provide the interface to the User. The following features and functions provide compelling reason for deployment of this technology:

- Sign control operation of fixed and portable DMS can be implemented from anywhere; this is particularly useful during after-hours and emergency use. An integrated GPS allows the location of the sign to be displayed on Google Maps, the current message can be previewed in real-time, new messages created, and maintenance diagnostics can be accessed. Similar WEBDirect access can be provided for Signal Controllers and Weather Stations, and any other ITS device.
- All devices can use the “picture of everywhere” capability of WEBDirect to serve real-time camera images of an intersection, road, sign, or wherever the cameras are pointed, without any additional hardware or applications.
- User configurable Web pages, utilizing underlying NTCIP object definition data, will allow easy customization of the user experience and functionality without changing the device controller software code. Full NTCIP communication functionality is retained in addition to WEBDirect functionality.

Intelligent Devices, Inc. is committed to providing a line of powerful and easy-to-use products for the Intelligent Transportation Systems industry.

Specification

CONFIGURATION



COMMUNICATION

Wireless Cellular WEB enabled for Central Software and WEB Access, via wireless Ethernet.
Local Serial Port for Diagnostics and Local Control of NTCIP functions.
10/100 Ethernet for local network connection

SOFTWARE SPECIFICATION

NTCIP Protocol Stacks Supported

Direct Connect : Data Objects -> SNMP -> Null -> PMPP -> Twisted Pair
Wireless : Data Objects -> SNMP/STMP -> Null -> UDP/IP or TCP/IP -> Cellular Wireless
LAN/WAN : Data Objects -> SNMP/SMTP -> Null -> UDP/IP or TCP/IP -> Ethernet

WEB Protocols Supported

FTP – File Transfer Protocol to manage the local Web Site
HTTP – Server HTML pages, JPEG and BMP images for display in Browser.
STMP – E-mail Alarm Notification
Browser Support – Internet Explorer primary, Netscape & Firefox secondary.

Compatible with the Intelligent Control Suite of NTCIP Central Software, or any NTCIP Central Software.

Options

- Training
- Application Assistance
- Telephone Support
- Upgrades and Enhancements

* NTCIP is a trademark of AASHTO/ITE/NEMA.
WEBDirect is a trademark of Intelligent Devices, Inc.
Patent pending.

