

Instructions for generating XML files for Web enabling

Before an IDI card can be used for WebDirect, it has to be enabled.

The enabling process is done by generating an XML file with a unique license number that is loaded onto the 'flash' on the card.

Procedure

- 1) Download the customer specific "Web server license generator" from the IDI server. See Figure 1.
- 2) List the IDI allocated board serial numbers and Rabbit allocated MAC addresses in the "Web server license generator" and run the program to generate the license XML files. See Figure 2.
- 3) Copy the XML files that were generated by the "Web server license generator" to the IDI board 'flash' using Flash FXP or similar program.

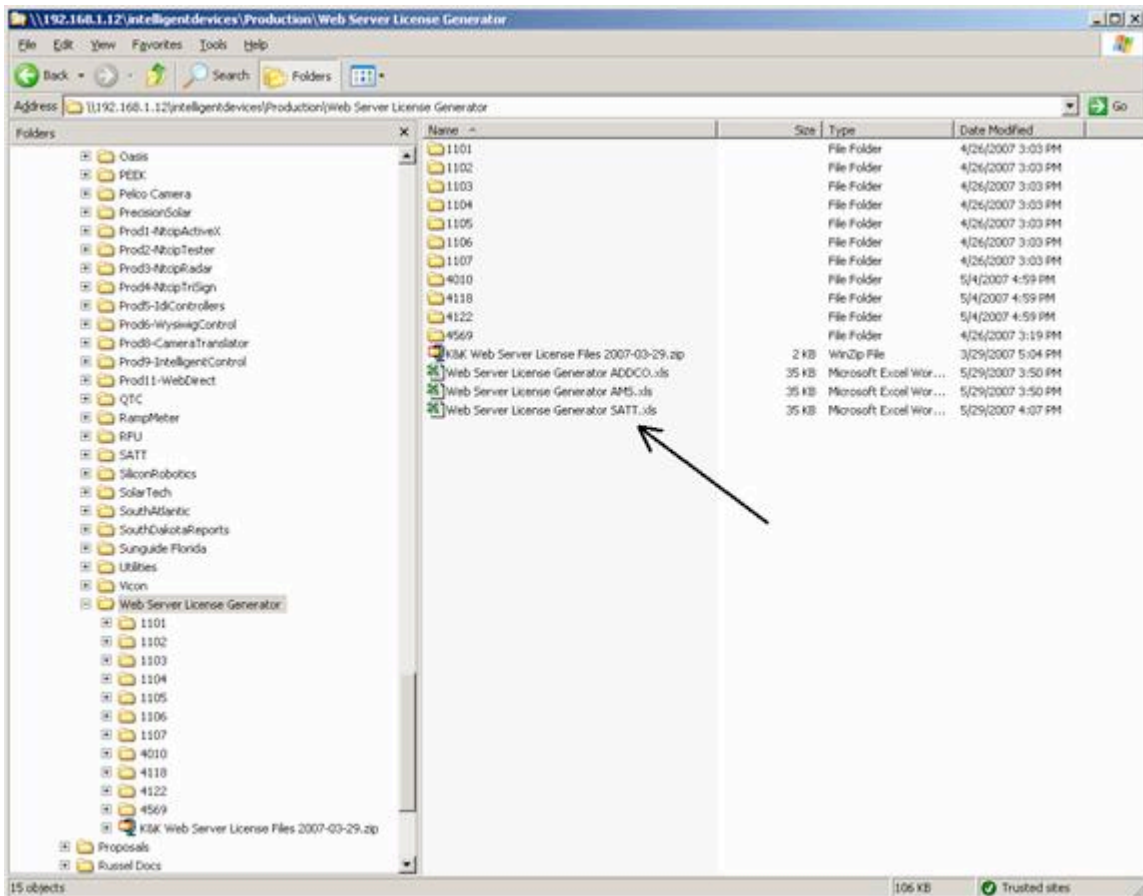


Figure 1

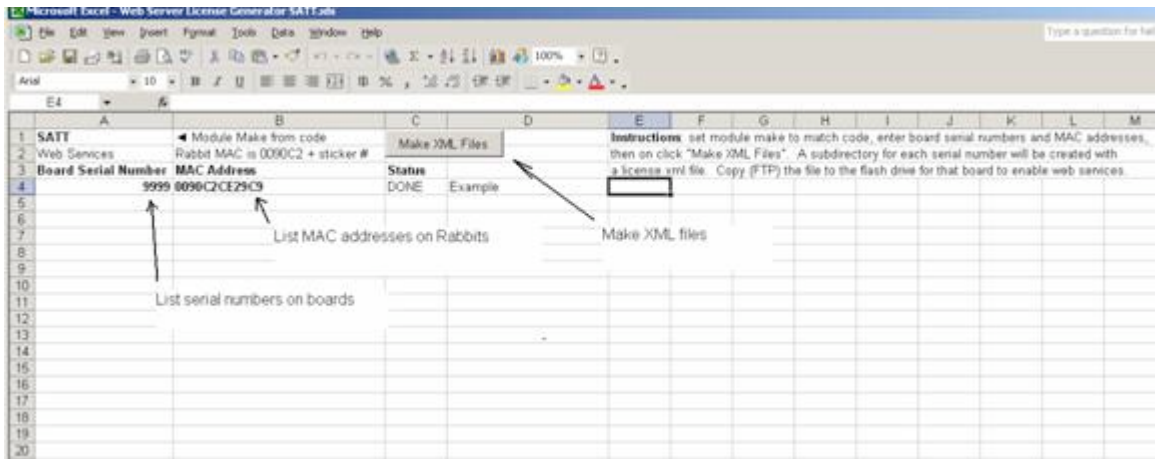


Figure 2